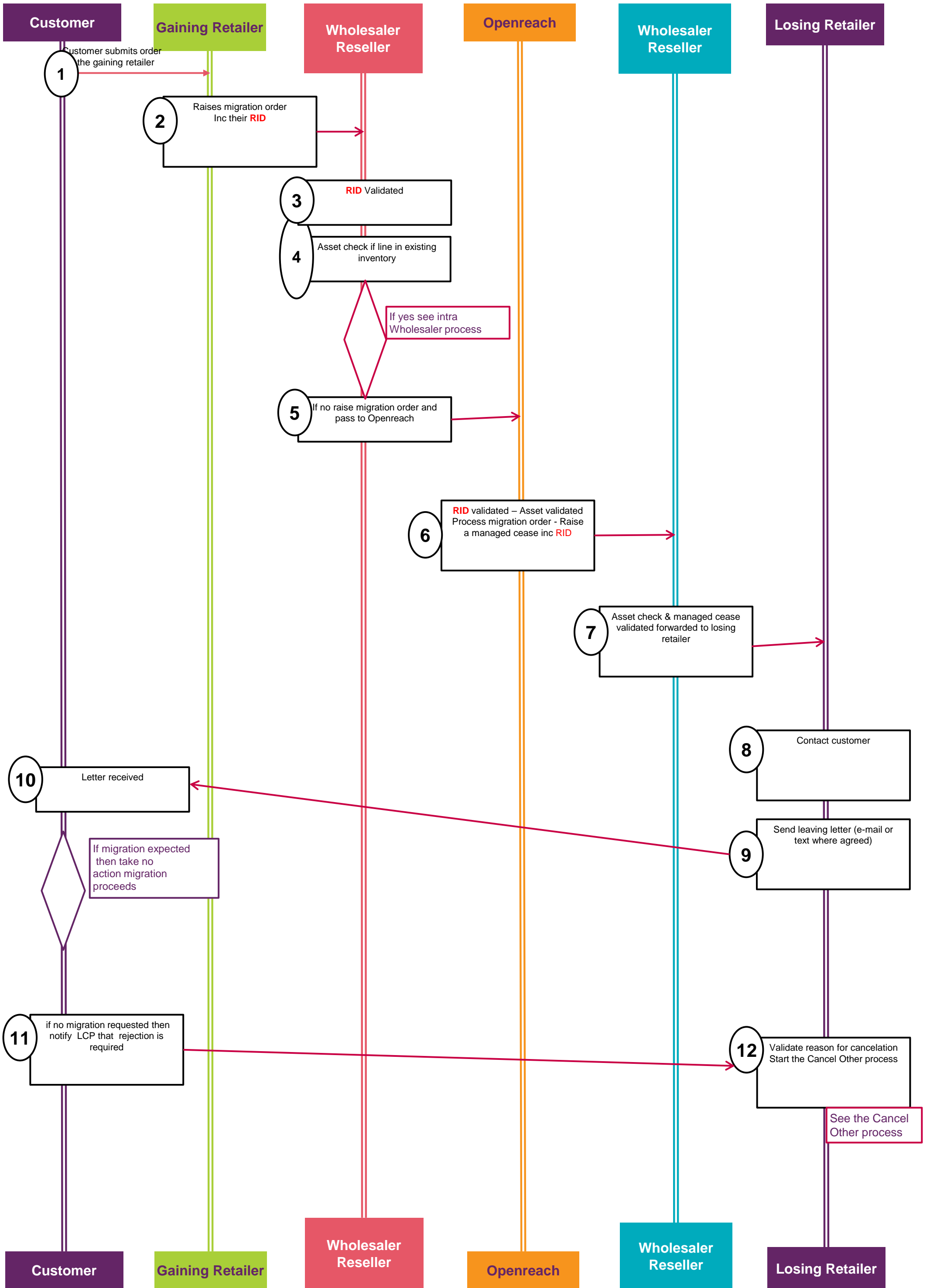
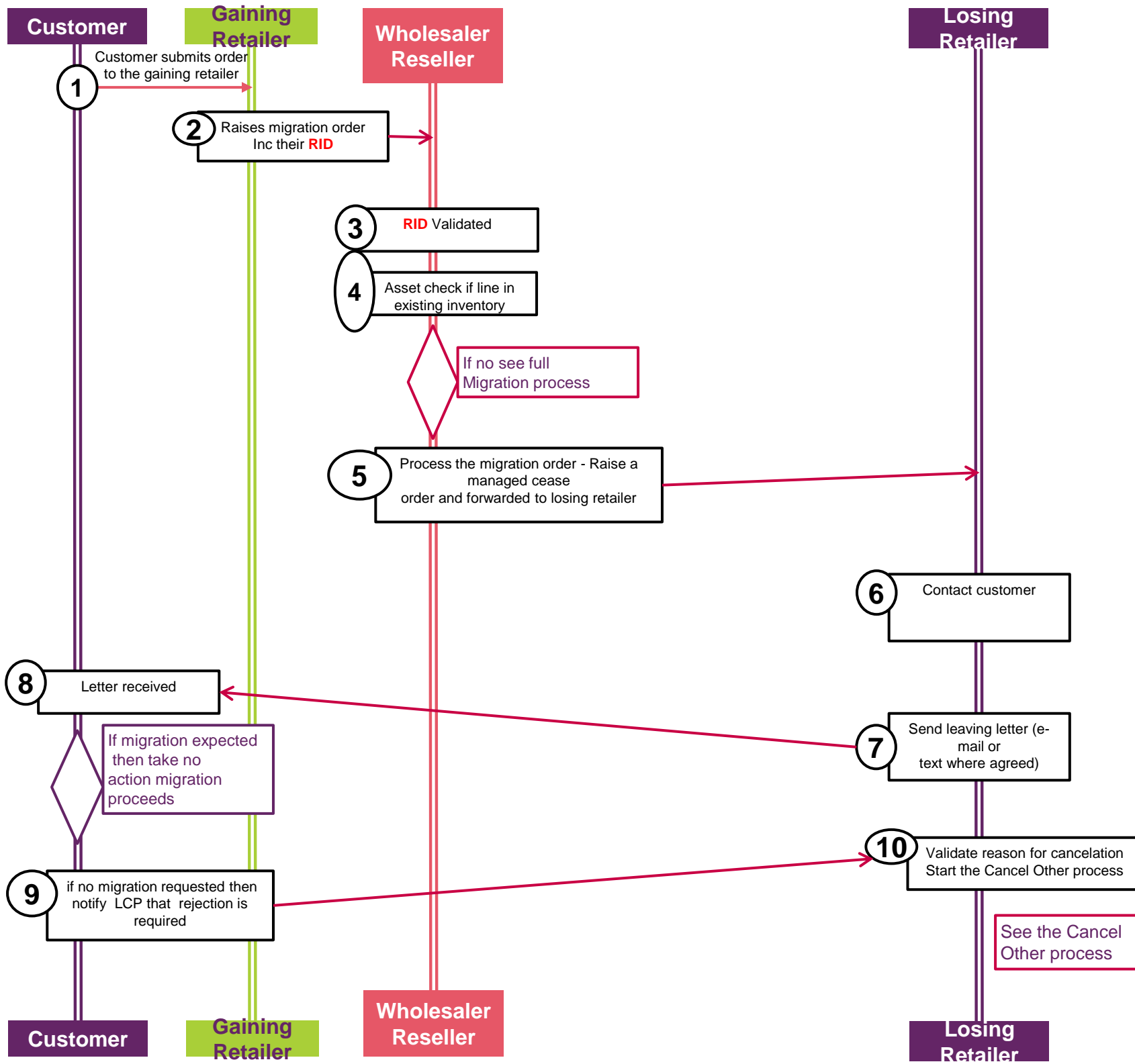


High Level Harmonised Migration Process (post 20th June 2015)



High Level Harmonised Migration Process intra Wholesaler / Reseller



Note 1

RID is the Retailer ID from the contracting party who hold the contractual relationship with the End User – This **RID** is passed through the transaction
Step 2-3

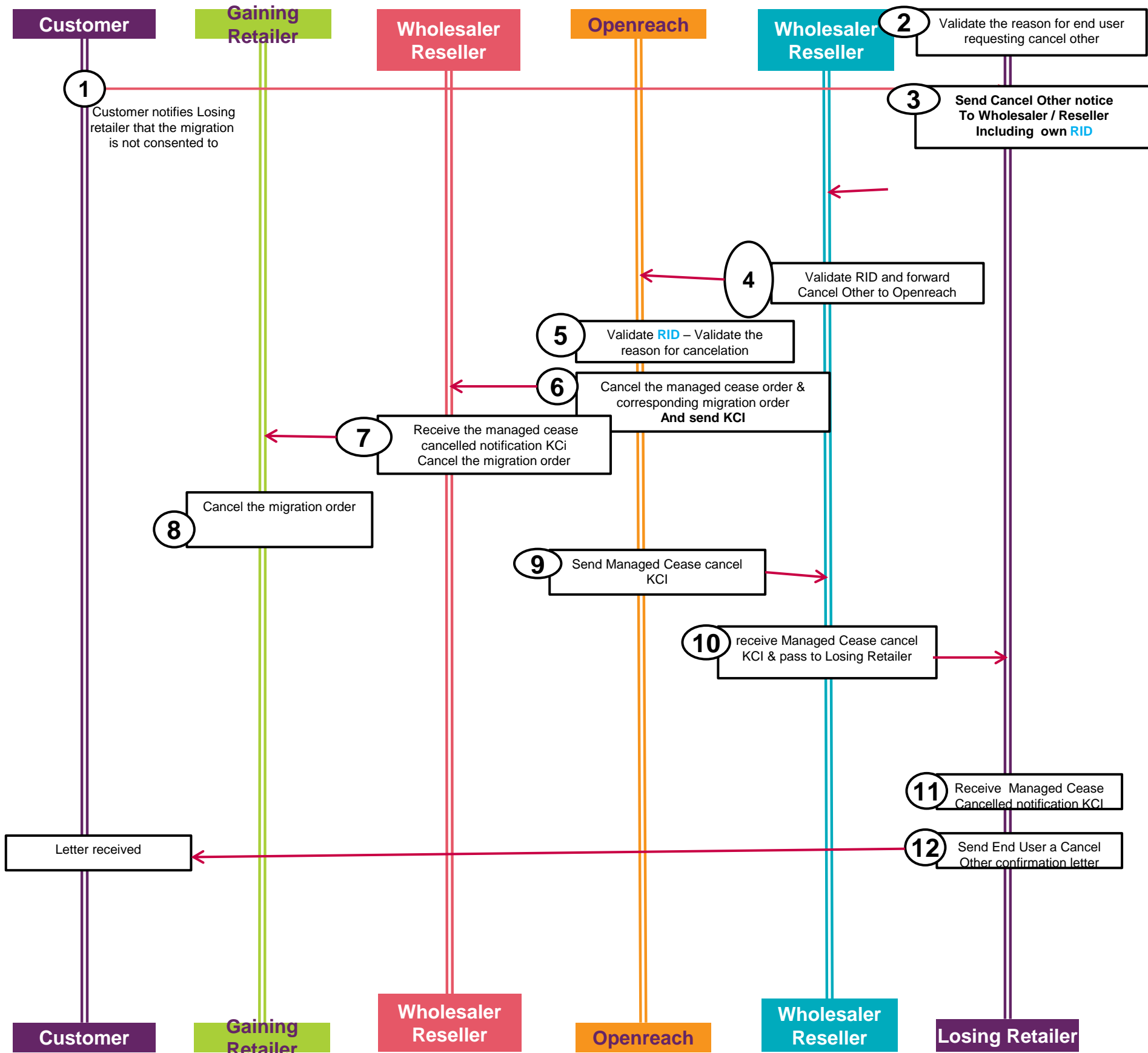
Note 2 This model is a simplified version of the industry trading model which can have multiple reseller relationships between the retailing CP (both Gaining and Losing) and the switching wholesaler / reseller.

Obviously any messages and RID passing and validation would have to be facilitated by any additional parties at the appropriate points.

Note 3

Transactions which stay at the wholesaler level need to be captured and included in the Ofcom reporting (COCO report) to be submitted by the Wholesaler / Reseller.

Cancel Other Process for End User Rejection



Note 1

RID in this context is the **Retailer ID** from the contracting party who held the contractual relationship with the End User prior to the migration order being submitted– This **RID** is passed through the transaction from steps 3-8.

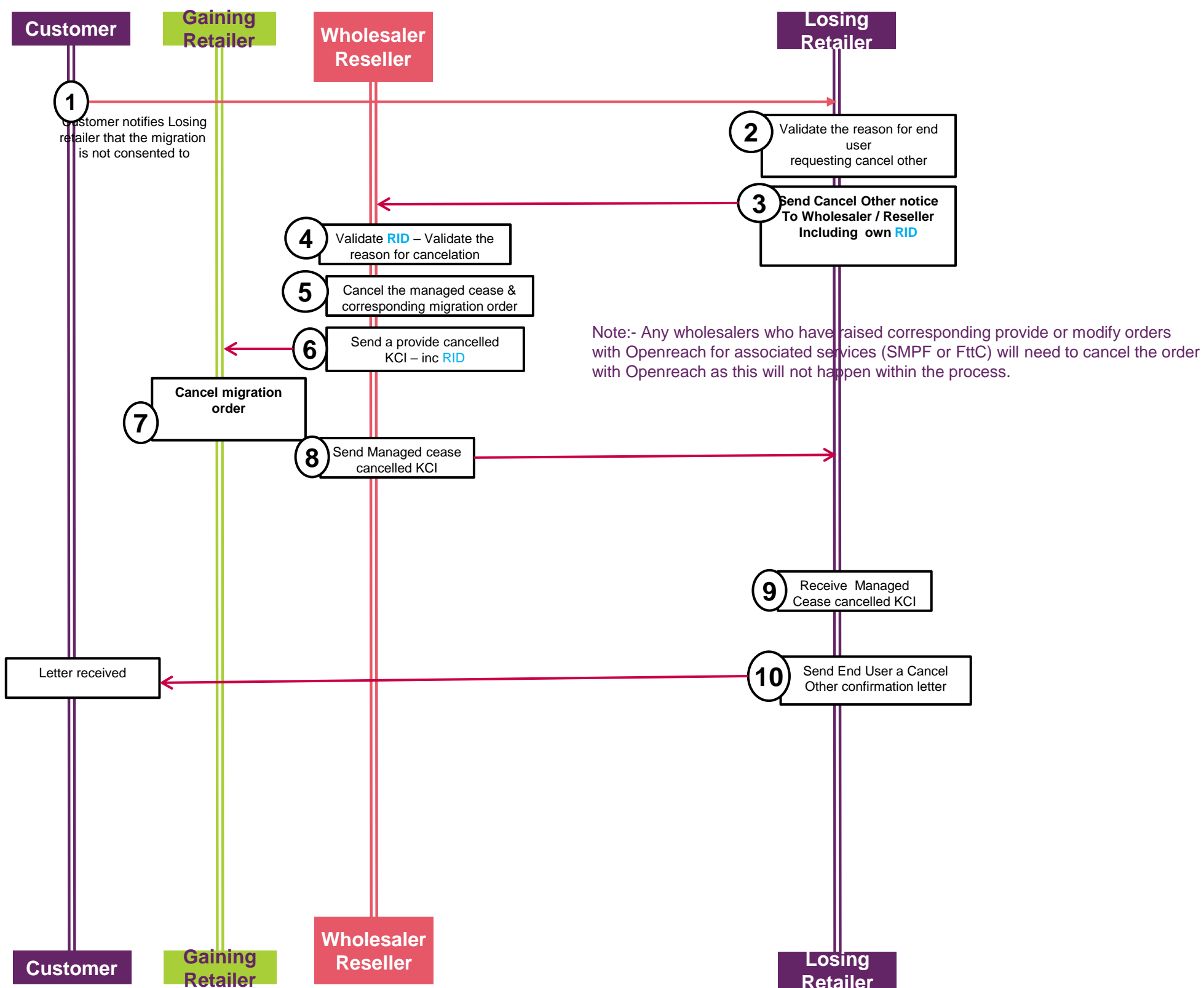
Note 2

All Transactions running through the process will be captured by Openreach and included in their Ofcom reporting under the COCO report.

Note 3

The automation of the RID being viewed for stages 7&8 are only enabled with the consumption of Schema change XXXX until this is consumed the recovery of the Losing retailer RID is a manual process

Cancel Other Process for End User Rejection intra Wholesaler/Reseller



Note 1

RID in this context is the Retailer ID from the contracting party who held the contractual relationship with the End User prior to the migration order being submitted- This RID is passed through the transaction from steps 3-7.

Note 2

All Transactions running through the process will be captured by the Wholesaler / Reseller and included in their Ofcom reporting under the COCO report.